



# **MOVE TO INCLUDE**

**[movetoinclude.us](http://movetoinclude.us)**

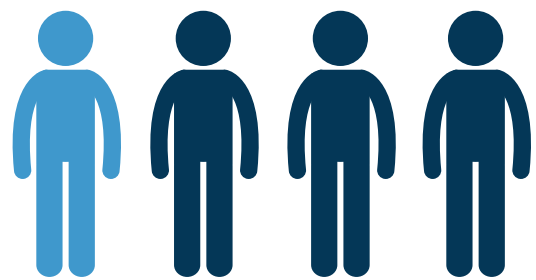
WXXI is proud to be the home of *Move to Include*, an award-winning national initiative and community of practice dedicated to promoting disability inclusion, representation, and accessibility in public media.



Built on the principle of  
**“Nothing About Us Without Us”,**  
this initiative spotlights the lived experience of  
people with disabilities and highlights important  
issues around disability

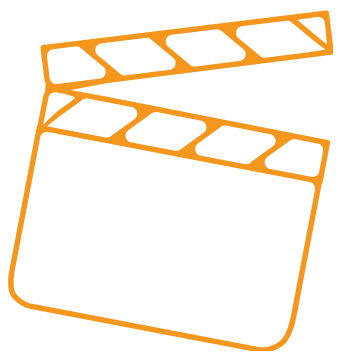


## 1 in 4 Americans



identify  
as having a  
disability  
(CDC, 2024)

## 66 Percent of Audiences



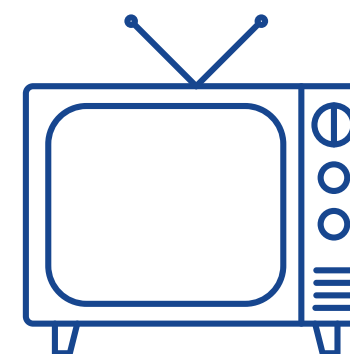
are unsatisfied  
with current  
representations of  
disability and mental  
health (Inevitable  
Foundation, 2024)

## 20 Million Households



have at least 1  
disabled family  
member (WHO,  
2023)

## 4.1 Percent of Programs



feature disability  
themes (Nielsen,  
2022)







- 2003 ○ 'Dialogue on Disability' - WXXI begins annual collaboration with Al Sigl Community of Agencies
- 2014 ○ 'Move to Include' - WXXI expands our work on disability inclusion in partnership with the Golisano Foundation
- 2019 ○ 'The Pilot' - With support from CPB, WXXI welcomes its first cohort of partner stations (WCNY, WFYI, WGCU, Iowa PBS, and Oregon Public Broadcasting)
- 2024 ○ 'Move to Include, 2.0' - Building on the pilot program, WXXI is positioned to be the national resource hub for an expanded network of partner stations






**PBS** Sign In Home Shows Explore TV Schedules Shop Donate LIVE TV


# Move To Include

Spotlights the lived experiences of people with disabilities, promoting inclusion for all **MORE**


[+ My List](#)



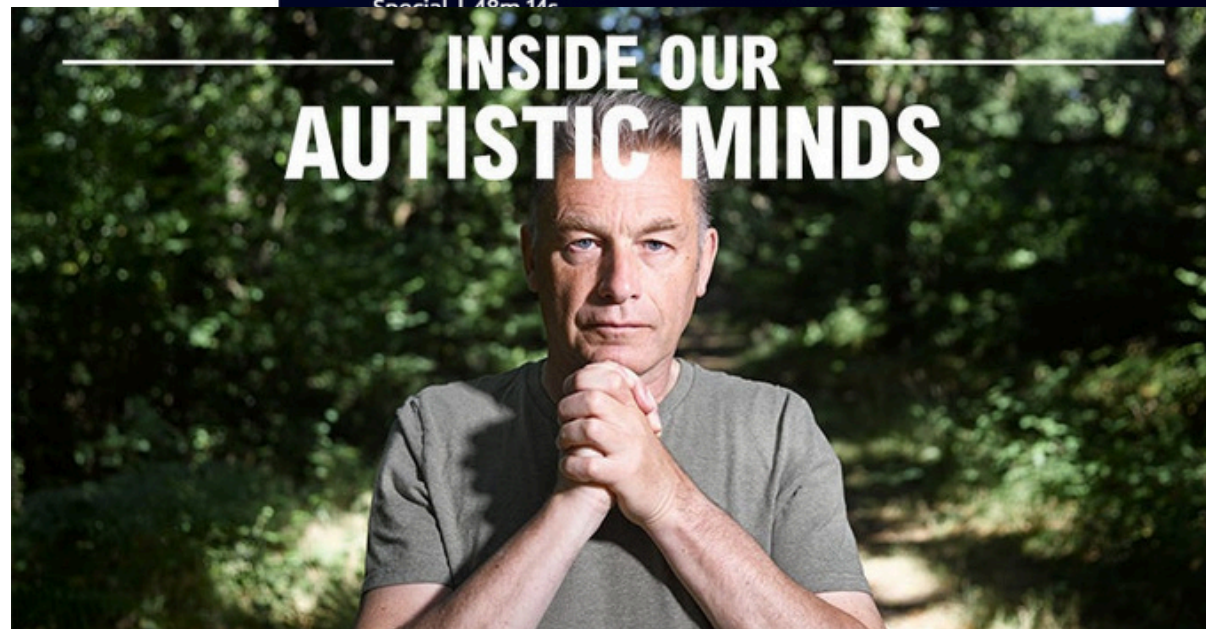
**Deconstructing Ableism: A Community Conversation**  
Special | 49m 14s



**A Good Life**  
Special | 56m 45s



**Arts inFocus - Move To Include Special**  
Special | 29m 24s














## Move to Include

1.1K likes · 1.3K followers

[Learn more](#) [Liked](#) [Message](#)

[Posts](#) [About](#) [Mentions](#) [Followers](#) [Photos](#) [Videos](#) [More](#)

Intro

Move to Include™ spotlights the lived experiences of people with disabilities and important disability issues, including education, housing, employment, and more through television, radio, news, community events, and digital media.

Manage Page on Meta Business Suite

[Create post](#) [Create Ad](#)

**WXXI** WXXI 11 [Watch](#) [Listen](#) [Ways to Give](#) [News](#) [Classical](#) [The Route](#) [CITY](#) [The Little](#) [Education](#)

### Move to Include™ at WXXI




WXXI is proud to be the home of Move to Include™, an award-winning national initiative to promote disability inclusion, representation, and accessibility in public media. Built on the principle of "Nothing About Us Without Us," Move to Include spotlights the lived experience of people with disabilities and highlights important issues around disability, including education, healthcare, housing, employment, and more through television, radio, news, community events, and digital media.

This initiative has its roots in "Dialogue on Disability", a now 20+ year partnership between WXXI and the Al Sigl Community of Agencies' Herman and Margaret Schwartz Community Series. In 2014, we received the generous support of The Golisano Foundation to formally launch a year-round initiative that became Move to Include™.

Today, the Move to Include™ network includes PBS stations throughout the United States, led by the team here at WXXI.


### Upcoming Broadcasts & Events



"Name Me Lawand" Advance Screening and Panel Discussion - The Little Theatre

08/19/2024 6:30 pm


[Learn More](#)



Move to Include: Celebrating Abilities - WXXI Classical

Radio

[Learn More](#)




This Old House Veteran's Special House Project - WXXI-TV

08/21/2024 12:30 am

WXXI TV

[Learn More](#)



Arts + Medicine: Disability, Culture and Creativity - WXXI-TV

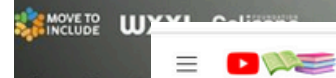
08/29/2024 3:00 pm


WXXI TV

[Learn More](#)

to Include  
rites - August 6 at 10:10 AM · [View](#)

riday, August 19, at [The Little Theatre](#) for a special advance screening of "Name Me Lawand". At Derby's Royal School for the Deaf, he learns sign language and discovers a way to connect with the world. As he thrives, his family faces deportation, challenging their way of life. Name Me Lawand is a love letter to the power of friendship and community.... See more






#DeafTalent! well, It's truly about showcasing that. Deaf talent.

**ARTS IN FOCUS** **MATTHEW "JPOSH" SCHWARTZ** **LEE ENNIS**  
#DEAFTALENT! PRODUCER/PERFORMER INTERPRETER

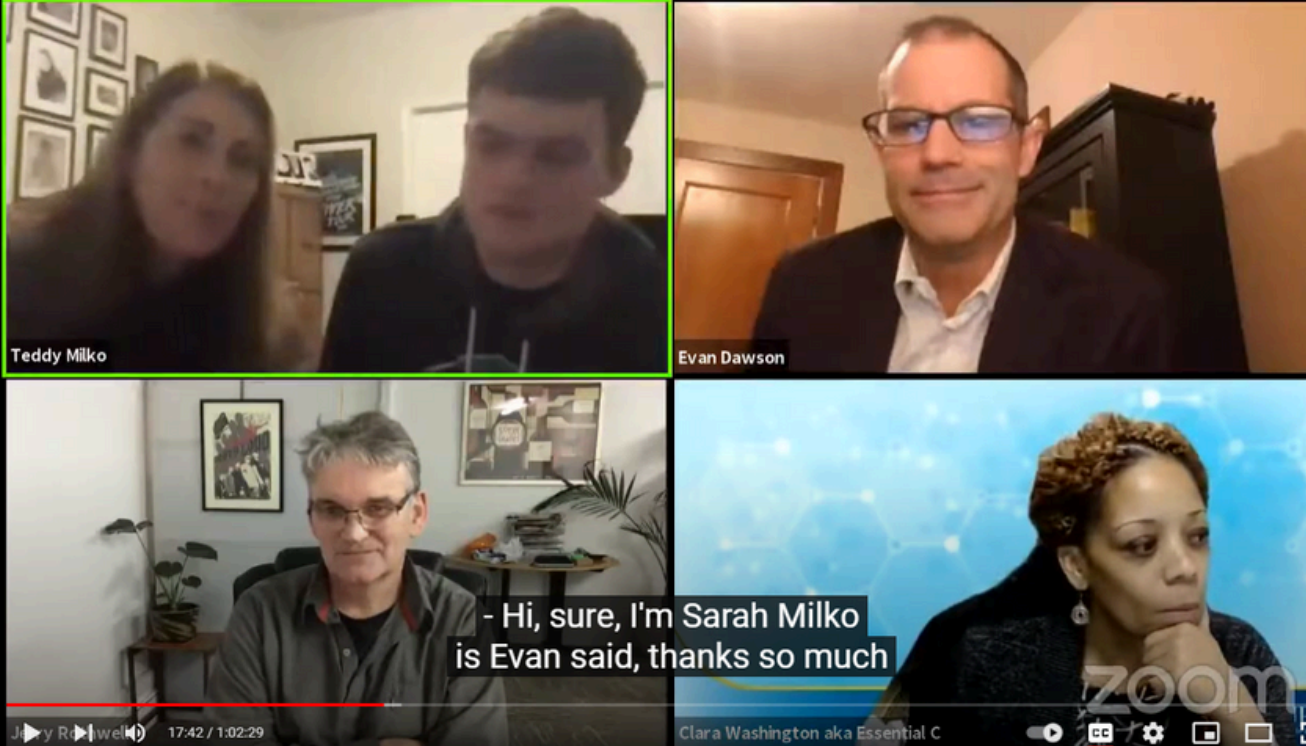
### WXXI Arts inFocus - Move To Include Special

**WXXI**  
2.87K subscribers

[Subscribe](#)

411 views · 3 years ago · [#DeafTalent](#) [#movetoinclude](#)





Teddy Milko Evan Dawson

- Hi, sure, I'm Sarah Milko is Evan said, thanks so much

Clara Washington aka Essential C

### The Reason I Jump Virtual Discussion

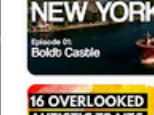
**WXXI**  
2.87K subscribers

[Subscribe](#)

1K views · 3 years ago

[9](#) [Share](#) [Download](#) [Clip](#) [Save](#)

[All](#) [From WXXI](#)



**50% Discount**  
Sponsored · breeker.com

[All](#) [From WXXI](#) [Presentations](#)



**Start A Loan Bus**  
No telemarketing, no products. Build a rei your home  
Sponsored · BLB



**Deconstructing A Community Conv**  
WXXI  
316 views · 6 mont



**You're Organizing Wrong!**  
Nick Lewis  
537K views · 3 mo



**Norm & Company: Conversation wit**  
WXXI  
475 views · 1 year



**Colin Farrell Open His Son With An**  
People  
5.6M views · 5 day: New



**ADDITUDE**  
All the Feels: An ADHD Guide to Emotional Dysregulation and Resilience for Dysphoria



**FANTASTIC NEW YORK**  
Episode 10: Boldly Castle



**15 OVERLOOKED AUTISTIC TRAITS IN WOMEN**



**DO NOT NEGOTIATE**





# MOVE TO INCLUDE

Collections &gt; Move to Include

In This Collection: Media Gallery (5), Video (104) for Grades All

## Move to Include

In this collection:

[Move to Include: Professional Development](#)
[Aging & Adult Services](#)
[Assistive Technologies](#)
[Education](#)
[Careers](#)
[Disabilities and Inclusion](#)
[The Arts & Music](#)
[Sports & Recreation](#)

Funded by




Move to Include is a production of WXXI Public

## Move to Include


[Share to Google Classroom](#)

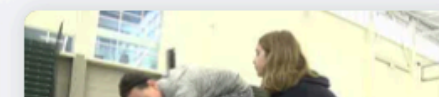
[Social Share](#)

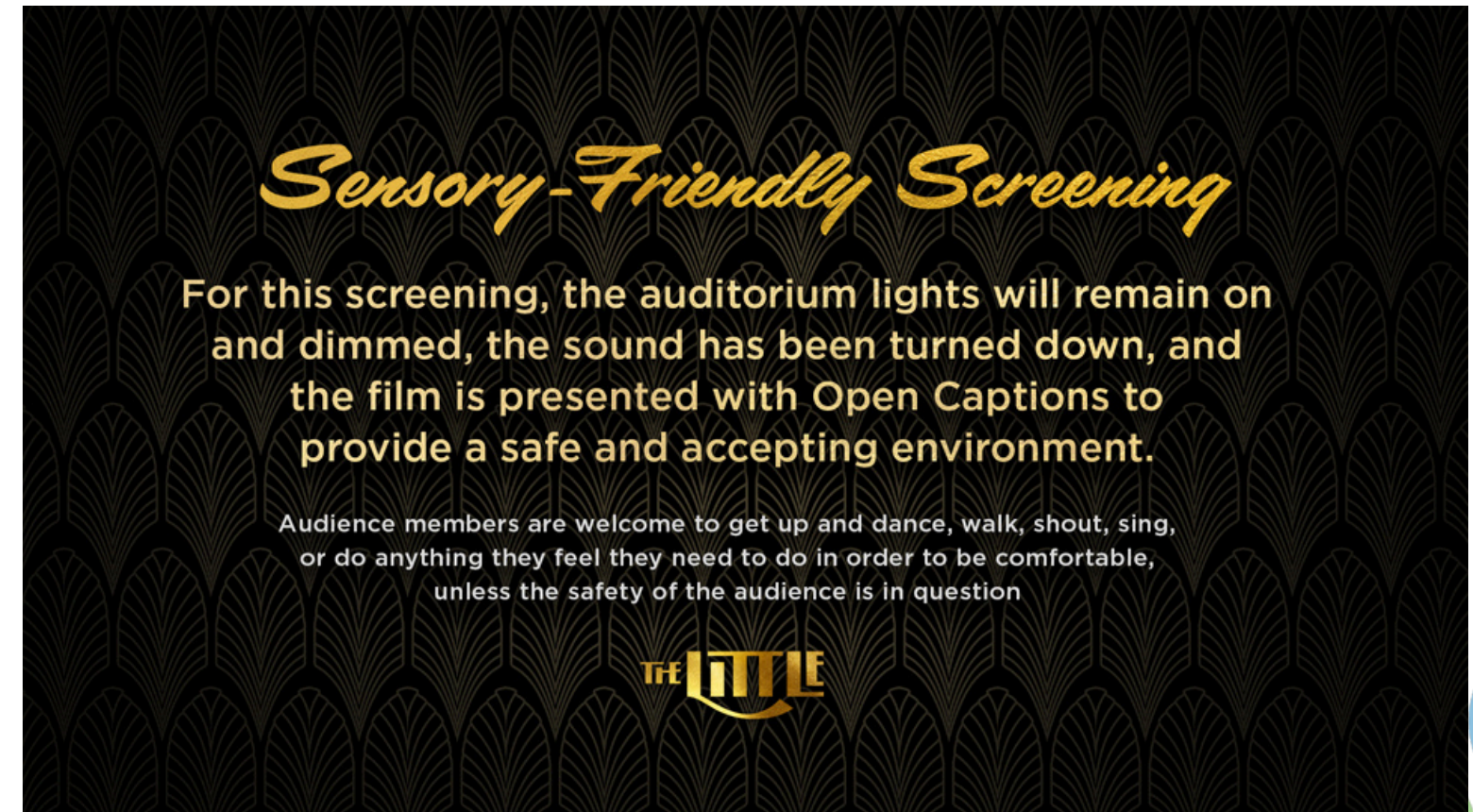
[Favorite](#)

This collection of videos and activities, targets grades 5-13+ comes from *Move to Include*, the multi-platform public media initiative designed to promote inclusion for people with disabilities. *Move to Include* also seeks to elevate the voices and experiences of people with disabilities in telling their own stories. It also provides a professional development section for educators and families. The collection is originated by the work of WXXI. Partner stations, IowaPBS, OPB, WCNY, WFYI, and WGPU also have contributed resources to the collection.

Each segment has been carefully selected to engage students in concepts of inclusion across the curriculum, and incorporates activities, online resources, and videos to address topics and standards across science, technology, engineering, English language arts, health and physical education, the arts and more. Topics include: Assistive Technologies, Education, Careers, Disabilities & Inclusion, The Arts & Music, Sports & Recreation, Aging and Adult Services and Professional Development.

## Move to Include: Professional Development







 How locally developed AI tools are helping parents of Deaf children learn ASL  Share

PBS is an American public broadcast service.

# AI FOR ASL



**CONNECTIONS**  
WITH EVAN DAWSON  
Watch on  YouTube



“(Move to Include™) made me realize how much I didn't know about the lives of people with disabilities. It made me sad to think I was so ignorant ... It really was life-changing for me.”

*- Move to Include™ Feedback Survey*





**“As a disabled person myself with a partner with autism,  
it was refreshing and exciting to watch representation  
on the screen that we felt represented ourselves -  
rather than watching abled bodied people pretend to be  
disabled, we were watching disabled people be their  
authentic selves on the big screen”**

*- Move to Include™ Feedback Survey*



# **Joining the Movement:** ***Becoming a Partner Station***



- **You know your community best!** Our team is here to support, not dictate, your *Move to Include* efforts
- This is a journey without a final destination, but...
- **You're already on your way!** Being here today shows your commitment to promoting disability inclusion, representation, and accessibility





- What is my station currently doing to address Diversity, Equity, Inclusion, Accessibility, and Belonging (DEIAB)?
- How might *Move to Include* fit into our current and future plans and programming?
- Which current staff, teams, and/or board members could support this work?
- Which segments of the disability community are represented in my area?
- Who in our community might we approach as local partners?
- Are there local fundraising or corporate support opportunities?





- Appoint a *Move to Include* point person at your station
- Maintain a *Move to Include* landing page within your station's website
- Promote *Move to Include* within your community and actively build relationships with local partners
- Program and promote national *Move to Include* related content, i.e. Independent Lens, POV, "A Good Life", Carl the Collector, etc.
- Provide quarterly reporting on your *Move to Include* efforts to WXXI
- Adhere to *Move to Include*'s branding and inclusive language guidelines







## The Life Autistic

### Specials



[The Life Autistic Documentary](#)



[The Life Autistic Collection](#)





## World of Adaptive Sports

[About](#)[Syracuse Challenger Baseball](#)[Stream On-Demand](#)[Special Olympics](#)[USA Wheelchair Football League](#)[Contact](#)[Connect with Us!](#)

WCNY is excited to cover the "World of Adaptive Sports." These games feature outstanding athletes and even greater stories. Whether playing Challenger Baseball, sled hockey, adaptive basketball, wheelchair football, or competing in skiing or tennis in the Special Olympics, these athletes embody the best of sport.

They showcase competition in its purest form: the courage to confront challenges, the will to defy expectations, the character to display sportsmanship, and the drive to reach new levels of excellence. Working with our partners at sister station WNED in Buffalo, we are thrilled to bring these events to our audience on television and streaming on the WCNY YouTube channel. Watch as adaptive sports bring our communities together, shatter stigmas, and open our eyes to true possibilities. Stay tuned for some of the most enjoyable, fun, and inspiring sports around.



*It's more fun to read with a friend!*

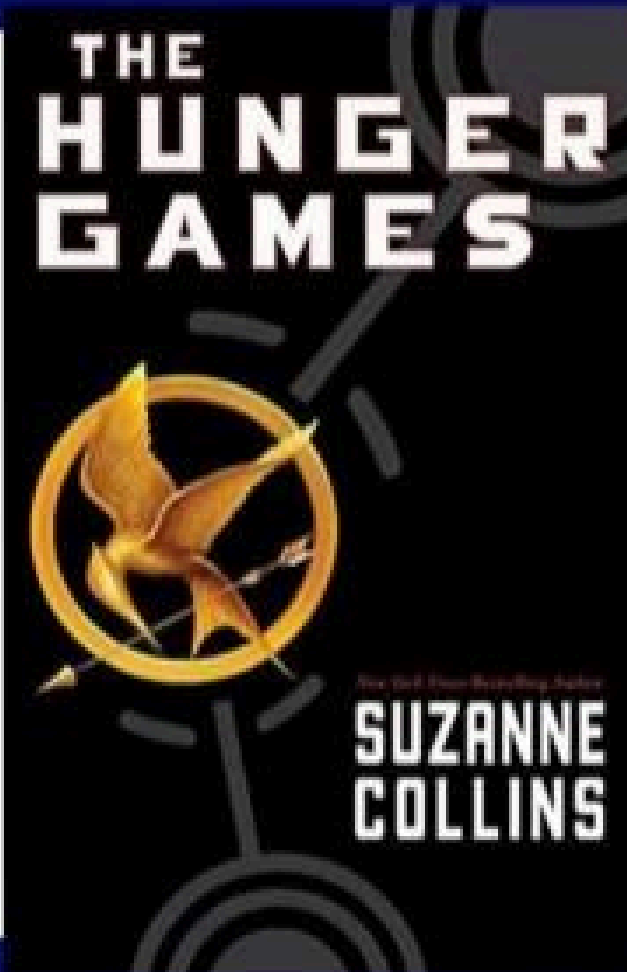
## **VIRTUAL BOOK CLUB**

**Thursdays, Jan. 30 - March 27, 2025**  
**4:30 p.m Central, 5:30 p.m. Eastern**  
**(Via Zoom)**

**For adults with and without  
an Autism diagnosis.**

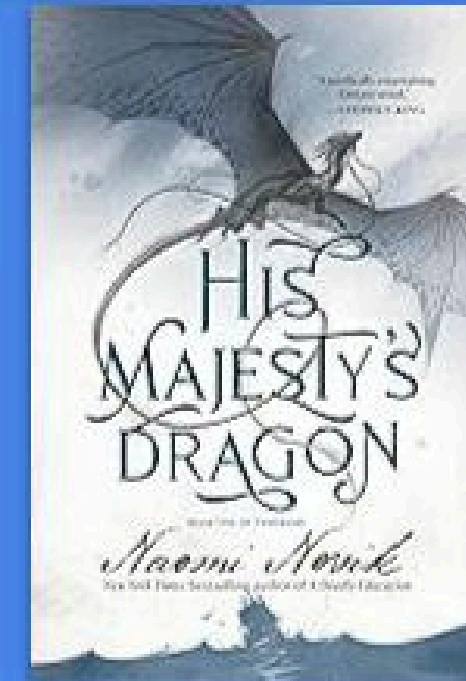
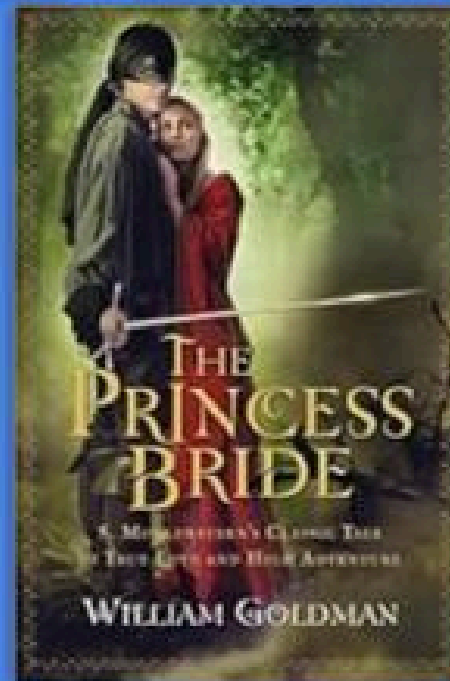
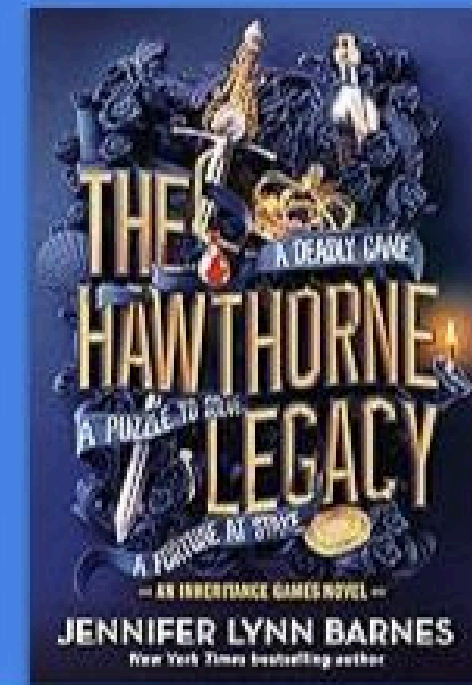
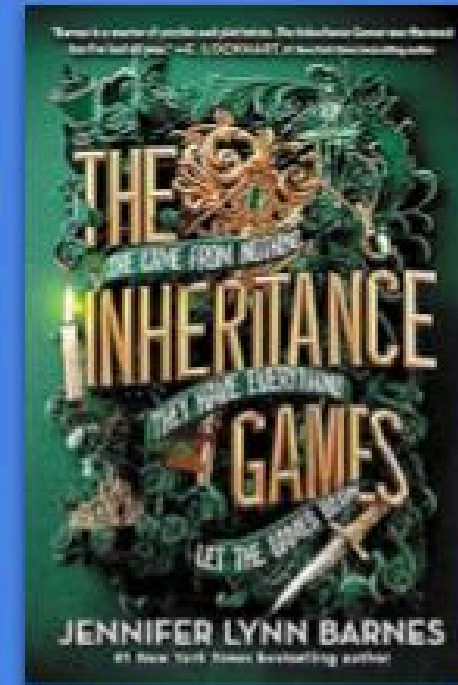
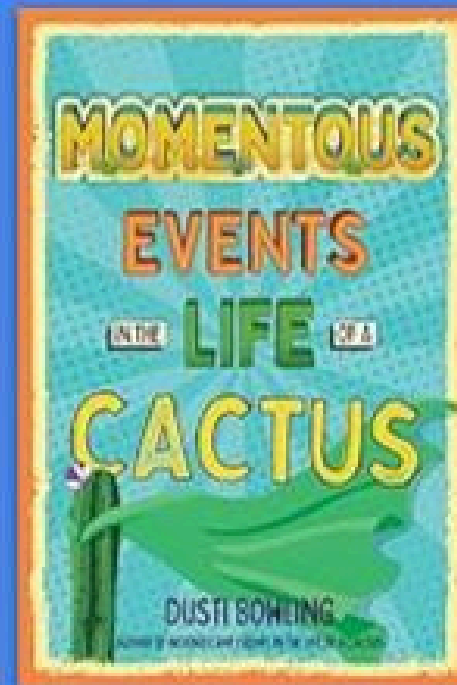
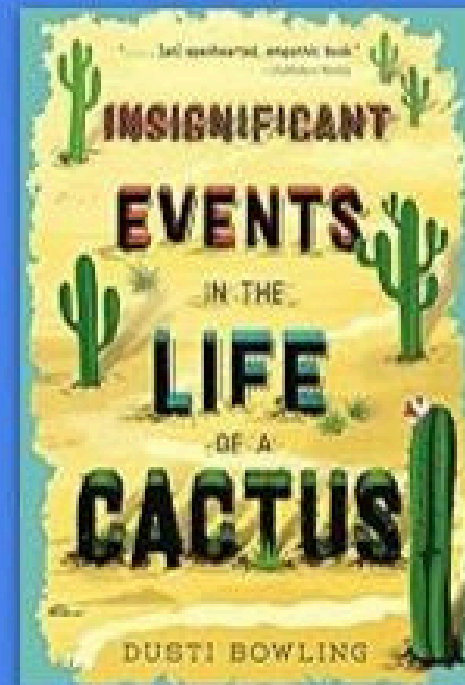
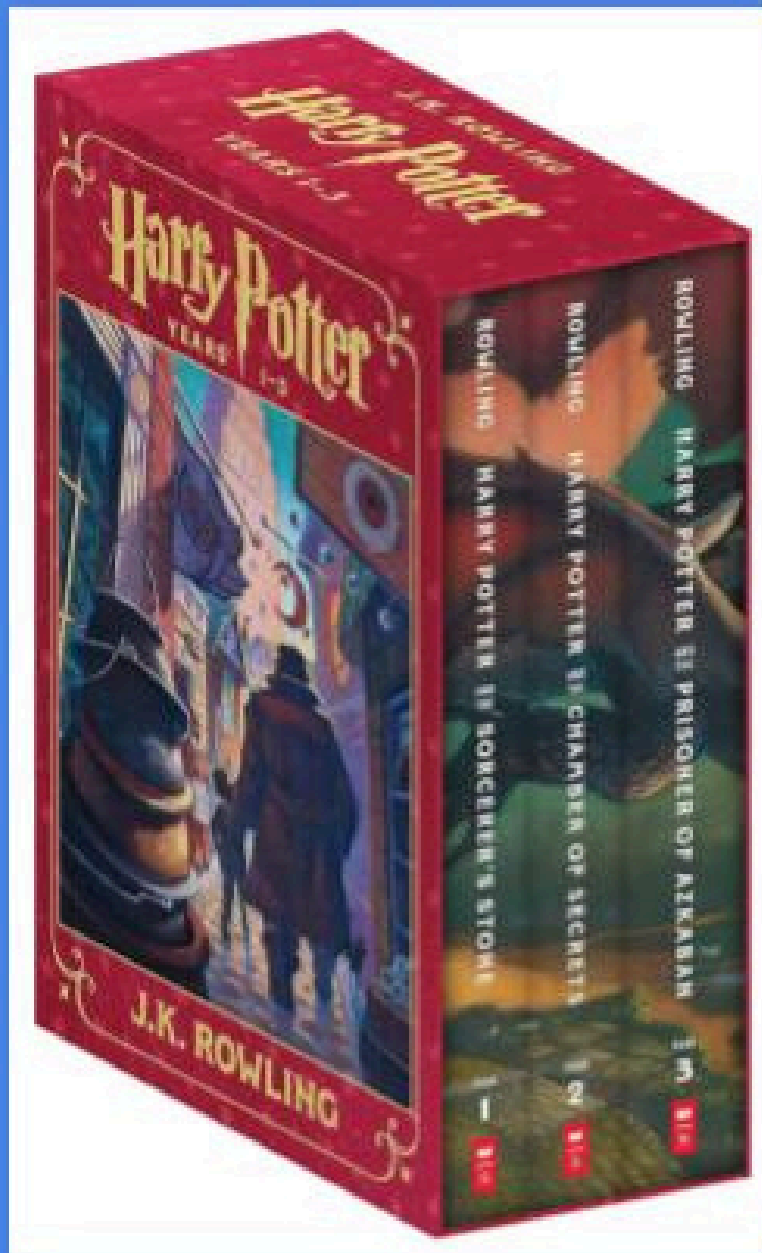
**Ages 18 - 35**

**Click here to register.**





## Move To Include Virtual Book Clubs



# *Learn More*

- Check out our [national website](#)
- Download a copy of our updated and expanded [Station Playbook](#)
- Ready to get started? Complete our [Partner Station Interest Form](#)
- Connect with me on [LinkedIn](#) or by email at [sabbamonte@wxxi.org](mailto:sabbamonte@wxxi.org)
- *Save the date!* Our next welcome workshop and training is scheduled for April 1-2, 2025 at WXXI in Rochester NY

